

# DASHBOARD REMOVAL/INSTALLATION

---

B3E091755210W01

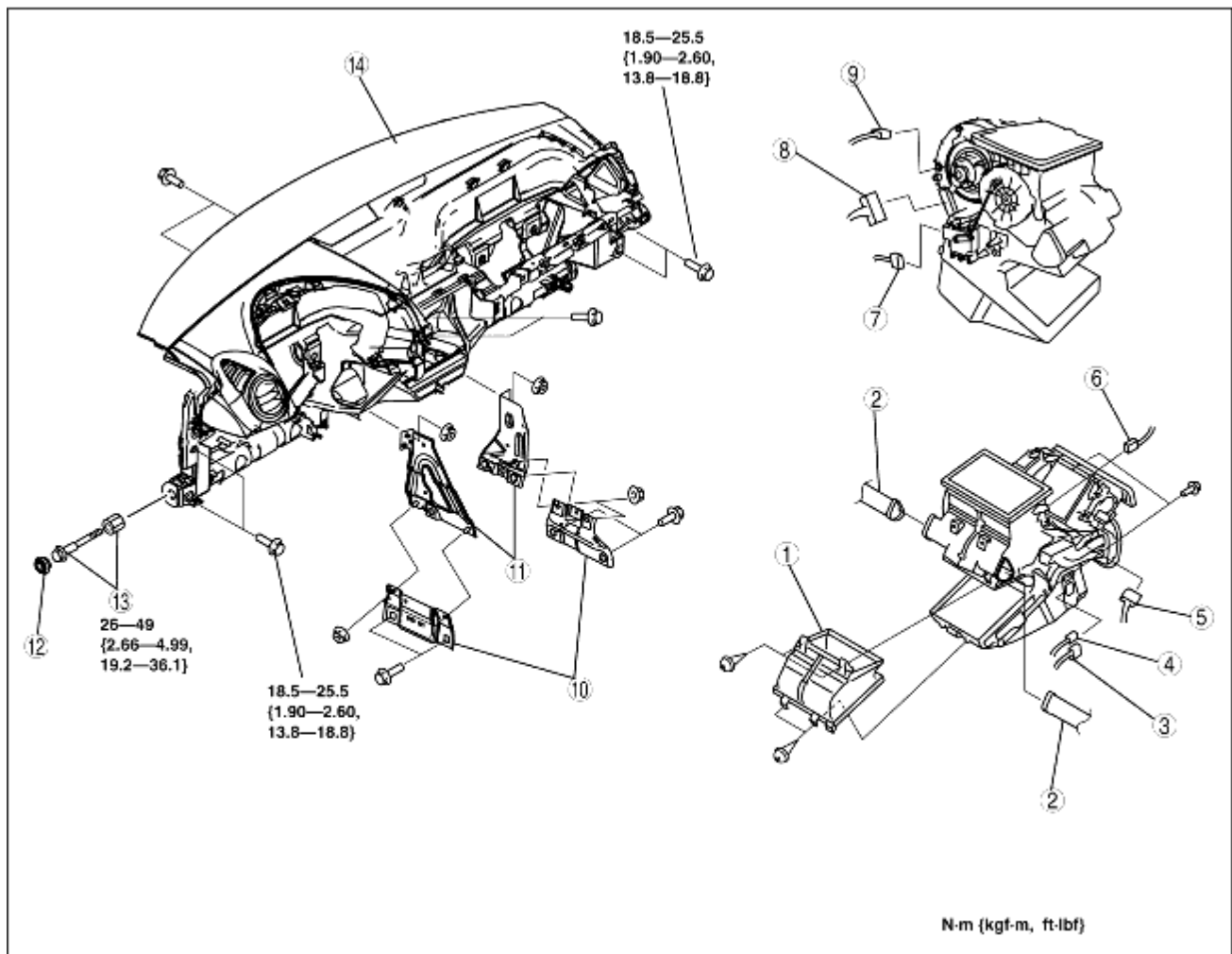
1. Disconnect the negative battery cable.

2. Remove the following parts:

- (1) Front doors (See [FRONT DOOR REMOVAL/INSTALLATION](#))
- (2) Console (See [CONSOLE REMOVAL/INSTALLATION](#).)
- (3) Shift lever component (MTX) (See [SHIFT MECHANISM REMOVAL/INSTALLATION](#))
- (4) Selector lever component (ATX) (See [SELECTOR LEVER COMPONENT REMOVAL/INSTALLATION](#))
- (5) Decoration panel (See [DECORATION PANEL REMOVAL/INSTALLATION](#).)
- (6) Front scuff plate (See [FRONT SCUFF PLATE REMOVAL/INSTALLATION](#))
- (7) Glove compartment (See [GLOVE COMPARTMENT REMOVAL/INSTALLATION](#).)
- (8) PJB (See [PASSENGER JUNCTION BOX \(PJB\) REMOVAL/INSTALLATION](#))
- (9) Lower panel (See [LOWER PANEL REMOVAL/INSTALLATION](#).)
- (10) Driver-side air bag module (See [DRIVER-SIDE AIR BAG MODULE REMOVAL/INSTALLATION](#))
- (11) Column cover (See [COLUMN COVER REMOVAL/INSTALLATION](#).)
- (12) Meter hood (See [METER HOOD REMOVAL/INSTALLATION](#).)
- (13) Instrument cluster (See [INSTRUMENT CLUSTER REMOVAL/INSTALLATION](#))
- (14) Steering shaft (See [STEERING WHEEL AND COLUMN REMOVAL/INSTALLATION](#).)
- (15) A-pillar trim (See [A-PILLAR TRIM REMOVAL/INSTALLATION](#).)
- (16) Center panel module (See [CENTER PANEL MODULE REMOVAL/INSTALLATION](#).)
- (17) Climate control unit (See [CLIMATE CONTROL UNIT REMOVAL/INSTALLATION \[FULL-AUTO AIR CONDITIONER\]](#)) (See [CLIMATE CONTROL UNIT REMOVAL \[MANUAL AIR CONDITIONER\]](#)) (See [CLIMATE CONTROL UNIT INSTALLATION \[MANUAL AIR CONDITIONER\]](#))
- (18) LCD unit (See [LCD UNIT REMOVAL/INSTALLATION](#).)
- (19) Rear heat duct (1) (See [REAR HEAT DUCT REMOVAL/INSTALLATION](#))
- (20) Passenger-side air bag module (See [PASSENGER-SIDE AIR BAG MODULE REMOVAL/INSTALLATION](#))
- (21) Car-navigation unit (See [CAR-NAVIGATION UNIT REMOVAL/INSTALLATION](#))
- (22) Windshield wiper arm and blade (See [WINDSHIELD WIPER ARM AND BLADE REMOVAL/INSTALLATION](#))
- (23) Cowl grille (See [COWL GRILLE REMOVAL/INSTALLATION](#))
- (24) Cowl panel (See [COWL PANEL REMOVAL/INSTALLATION](#))
- (25) Windshield wiper motor (See [WINDSHIELD WIPER MOTOR REMOVAL/INSTALLATION](#))

3. Disconnect the dashboard harness connectors.

4. Remove in the order indicated in the table.



B3E0917WY01

1	Heater case
2	Duct
3	Power MOS FET connector (with full-auto air conditioner system)
4	Evaporator temperature sensor connector
5	Air intake actuator connector
6	Air mix actuator connector (with full-auto air conditioner system)
7	Airflow mode actuator connector (with full-auto air conditioner system)
8	Resistor connector (with manual air conditioner system)
9	Blower motor connector
10	Dashboard bracket (lower)
11	Dashboard bracket (upper)
12	Cap
13	Bolt
14	Dashboard

### Warning

- Removing the dashboard without supporting it can be dangerous. The dashboard may fall and injure you. Always perform the following procedure with at least another person.

5. Remove the dashboard.
6. Take the dashboard off from the front driver-side door opening.
7. Install in the reverse order of removal.